

Rhodiola Extract

Product Information

Product Name: Rhodiola extract

Plant Part: Root/Leaf

Active ingredient: salidroside, rosavins

CAS No: 10338-51-9

Molecular Formula C₁₄H₂₀O₇

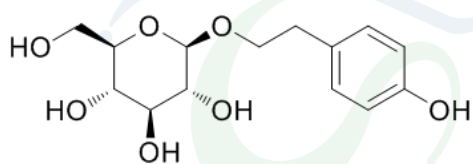
Molecular Weight 300.3044

Appearance: Brown to reddish-brown powder

Extraction Type: Ethanol & water

Packing: 25kg/drum

Storage: Store in a cool & dry area, keep away from the direct light and heat.



Product Introduction

Rhodiola (*Rhodiola Rosea*), often referred to as Arctic root or golden root, is classified as an adaptogenic herb. This designation signifies its ability to enhance resilience to stress in a nonspecific fashion, without disrupting regular biological functions. Native to the high altitudes of the Arctic regions in Europe and Asia, *Rhodiola Rosea*'s roots have been utilized for centuries in traditional medicinal practices in Russia and Scandinavian countries.

Salidroside, a natural bioactive ingredient, possesses significant medicinal value. It exhibits promising therapeutic potential in metabolic and cardiovascular health. Salidroside boasts a broad spectrum of pharmacological activities, encompassing anti-cancer, anti-inflammatory, antioxidant, anti-hypoxic, anti-fatigue, anti-aging, anti-viral, and anti-exercise fatigue properties. Its potential mechanism of action primarily revolves around the regulation of gene and protein expression, offering valuable insights for further research into Salidroside's potential role in treating metabolic and cardiovascular diseases.

Main Functions

1. immunity enhancement
2. anti-depression
3. Maintain cardiovascular health
4. antioxidant
5. Enhance human body functions
6. anticancer
7. Improve sexual function
8. Improve memory

Applications

1. Applied in food field, it is widely used as the functional food Supplement.
2. Applied in health product field, it is widely used to enhance immunity and resist melancholy.
3. Applied in cosmetics field, it is widely used to delay aging and compact skin.
4. Applied in pharmaceutical field, it is widely used to treat cardio-cerebrovascular disease.



Service Hotline: 400-021-8158

International Market: www.allinno.com

Website: www.seebio.com/ www.seebio.cn

E-mail: [foodadd@seebio.cn/](mailto:foodadd@seebio.cn) [finechem@seebio.cn/](mailto:finechem@seebio.cn) [sales@seebio.cn/](mailto:sales@seebio.cn) market@seebio.cn

Address: Building 5, No. 508 Chuanhong Road, Pudong, Shanghai 201202, P.R.China

